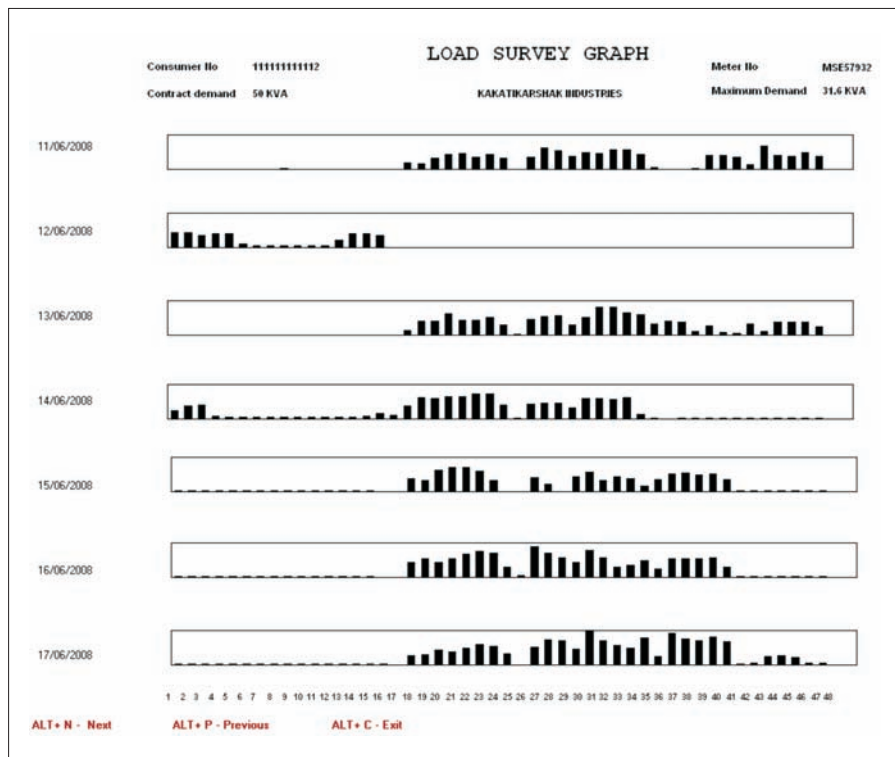


## Load Survey Graph

### Sample Graph



### Benefits

The above sample graph is typical newspaper printing press graph. Similarly every industry has separate load survey pattern. Through this graph we can compare with standard load survey pattern. If any deviation in the consumer load survey graph, that has to be scrutinized with actual data.

# Electronic Meter Data Analysis & Report Generation Software



## SANDS INSTRUMENTATION PVT. LTD.

CHENNAI (H.O.) : MF-7, CIPET Hostel Road, Thiru. Vi. Ka. Industrial Estate, Ekkaduthangal, Chennai - 600 032.

Tel : (044) 2225 3832 / 2231 3833 Fax : (044) 2225 3831 E-mail : sands@sandsindia.com

DELHI : No.2, First Floor, Westend Marg, Saidulajab, New Delhi - 110030. Ph : (011) 29535317, 29536318, 29536276

Telefax : (011) 29536732 E.mail : sandsdelhi@sandsindia.com

Product development is continuous process - Specification subject to change

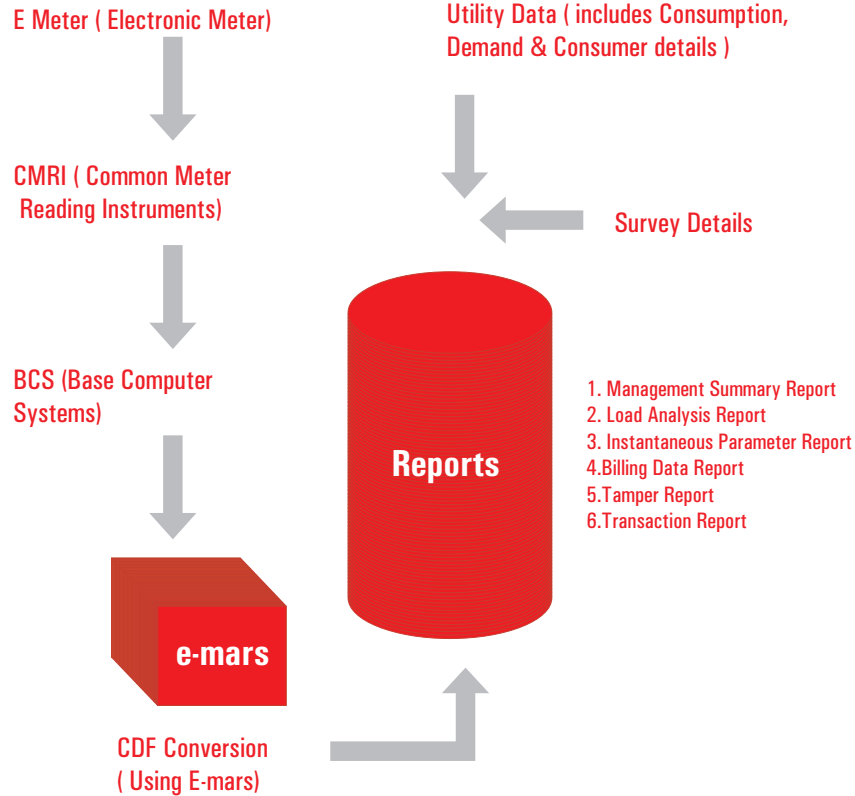
EDITION : 06/07

## Introduction

### E-mars

Electronic Meter Data Analysis and Report Generation Software is a software tool used for generating various reports in order to analyze the LT, HT & EHT consumer's Meter data of different makes.

## System Flow

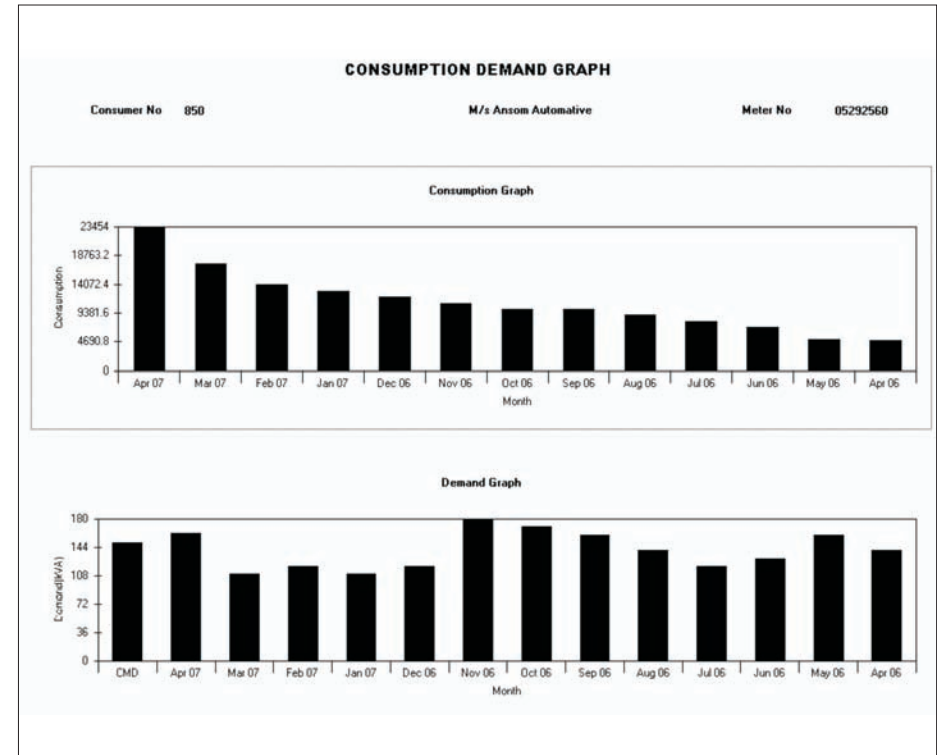


## Additional Features

- Option provided to update the Utility data both by manual entry and also by auto-updation
- In-built Help provided for all the phase of the application
- Print and Export options available for each and every report
- Export option provided for Graphical reports
- User-friendly screen provided for Survey data entry
- E-mars would provide features to generate error-free reports without any manual intervention

## Consumption & Demand Graph

### Sample Graph



### Benefits

Every Industry has consumption pattern. Every Month Consumption can be checked through this consumption pattern. If any deviation from this, we can scrutinize the Consumer. The Consumption depends upon Industry Production and Season.

Every Month Maximum Demand also can be monitored through this Graph. If the Demand and Consumption is Low, then we can examine the Consumer that why it is happening whether the Industry Production is Low or any Misuse. If the Production is Low, then we can change the CT to avoid low current recording in the Meter. If the Maximum Demand is high continuously, then we have to change the CT Ratio, Otherwise CT will get saturated which leads to abnormal recording of demand and Energy



## Transaction Report

Transaction Report includes Availability of Transaction Events occurred upto Current Month and during current Month. Any transaction Event such RTC Reset, Demand Reset and Tamper Reset has occurred in the meter in the absence of Utility Knowledge, that will be taken care of it by scrutiny

### Sample Report

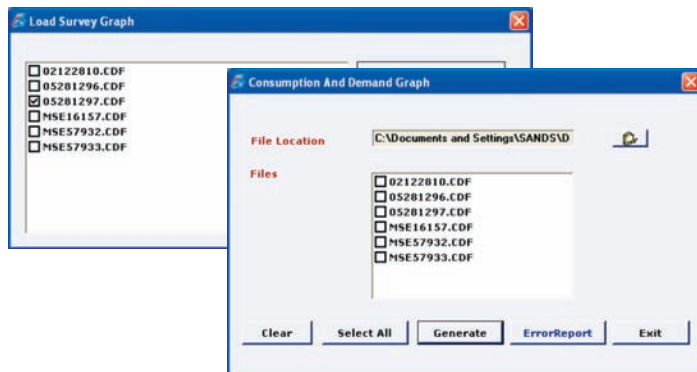
Transaction Report						
SI NO	Consumer Number	Consumer Name	Meter No	Transaction Events Recorded Upto Jun 2008	Transaction Events Recorded During Jun 2008	Meter Reading Date
1	101012313325	M/s Tarun Alloys Ltd.	MSE16157	NO	NO	11/12/2008
2	1111111111112	KAKATIKARSHAK INDUSTRIES	MSE57932	YES	NO	24/06/2008

\* NA - Not Available

## Graphical Reports

- Consumption & Demand Graph displays the last 1 year Consumption and Demand Graph along with Meter Number, Consumer Number & Consumer Name.
- Option provided to export the both the graphs as a single picture file

### Screen Shot

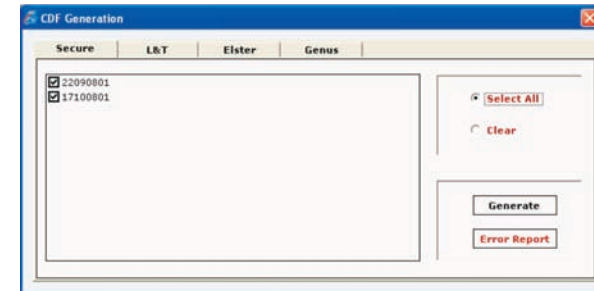


## CDF File Conversion

Every BCS Software has provision to convert ASCII File of Load Survey Data after downloading and Uploading the Meter Data. This would be converted into Common Data Format(CDF) Which would be useful for further Report Generation. Emars Software would generate CDF for the following Static Meters.

1. Secure
2. L&T
3. Elster
4. Genus

### Screen Shot



## Management Summary Report

Datewise Report -- Includes Every Day Consumption(kWh), Every day Maximum KVA, Every Day Min KVA, Every Day Power Factor, Cumulative Consumption(kWH) for the Duration, Maximum Demand(kVA) for the Duration, Min KVA for the Duration, Power Factor for the Maximum KVA period, Monthly Power Factor

Blackout Report --

- Includes Power Failure slots at both Consumer and supplier end
- Includes Power Failure and No-Load Slots at Consumer end

### Sample Report

#### Datewise Report:

Software has three options to generate the reports. Depending upon Utility Requirement, they can generate the reports. The Options are

- (1) Date Between
- (2) No. of Days
- (3) Full Report

Datewise Report					
Number Of Days : 5		MSE57932			
Consumer Number :	111111112	Meter Number :	MSE57932		
Consumer Name :	KAKATIKARSHAK INDUSTRIES	NO :	3		
Address :	PUNE	Contract Demand :	95 KVA		
InstDate :	24/06/2008	Integration Period :	30 Minutes		
NotifyDays :	5	Clearing Day :	24/06/2008		
		EndDate :	23/06/2008		
Date	InstID	Max KVA	Min KVA	PF	
19/06/2008	4192	1.000	0.900	0.875	
20/06/2008	87360	20.000	0.200	0.810	
21/06/2008	61400	17.000	0.200	0.910	
22/06/2008	59400	20.000	0.200	0.810	
23/06/2008	21700	22.000	0.800	0.820	
Total kWh :	138300				
Maximum KVA :	20.000	at	22:30	on	23/06/2008
Minimum KVA :	0.100	at	9:00	on	19/06/2008
Power Factor :	0.822	at	22:30	on	23/06/2008

Note: \* Max KVA and Min KVA indicate Maximum and Minimum KVA in 30 minute Integration Period.  
\*\* Power Factor is computed during the Maximum KVA Period.



